



PLITVICE LAKES HOTELS

# Congress facilities

fact sheet





# CLIMATE

The prevailing climate in the Plitvice Lakes National Park is moderately warm humid climate, with warm summers (according to Köppen classification, climate subtype Cfb). The largest rain quantities are measured usually in spring and autumn. In winter, precipitation typically occurs in the form of snow. Annual levels of precipitation range between 1148 and 2113 mm.

# LOCATION

Plitvice Lakes National Park is located in the Mountainous Croatia, in the northeast of the Lika region. Sixteen Plitvice Lakes are located between the Mala Kapela mountain range and the Lička Plješivica massif. There is 910 m difference in elevation between the highest (Seliški vrh, 1279 m) and lowest (river Korana, 369 m) points in the park.

## Nearest airports

(distance from Plitvice Lakes)

**Zagreb:** 143 km

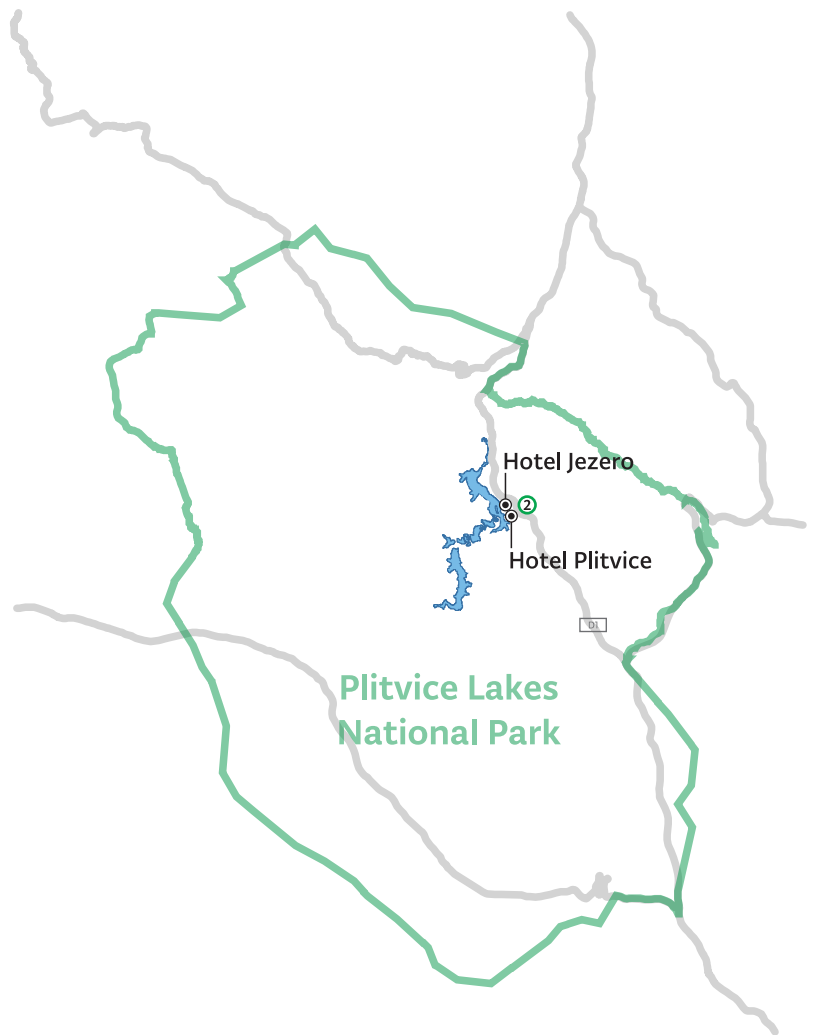
**Zadar:** 139 km

**Split:** 228 km

**Rijeka:** 169 km

**Pula:** 276 km

**Dubrovnik:** 465 km



## GPS Coordinates

Hotel Jezero

44°53'1.45"N 15°37'6.45"E

Hotel Plitvice

44°52'53.79"N 15°37'15.03"E

# HOTEL JEZERO

Josipa Jovića 2  
53231 Plitvička Jezera, Croatia  
T. + 385 (0)53 751 830  
E. [info2@np-plitvicka-jezera.hr](mailto:info2@np-plitvicka-jezera.hr)  
W. [np-plitvicka-jezera.hr](http://np-plitvicka-jezera.hr)



Due to its substantial accommodation capacities and rich offer of facilities, Hotel Jezero is an excellent choice for holding business events, banquets and dinners. The congress centre includes a congress hall and meeting rooms with a total area of 571 m<sup>2</sup>. With a total capacity of 356 seats and excellent audio-visual equipment, Hotel Jezero has become one of the leading congress hotels in the Lika region.

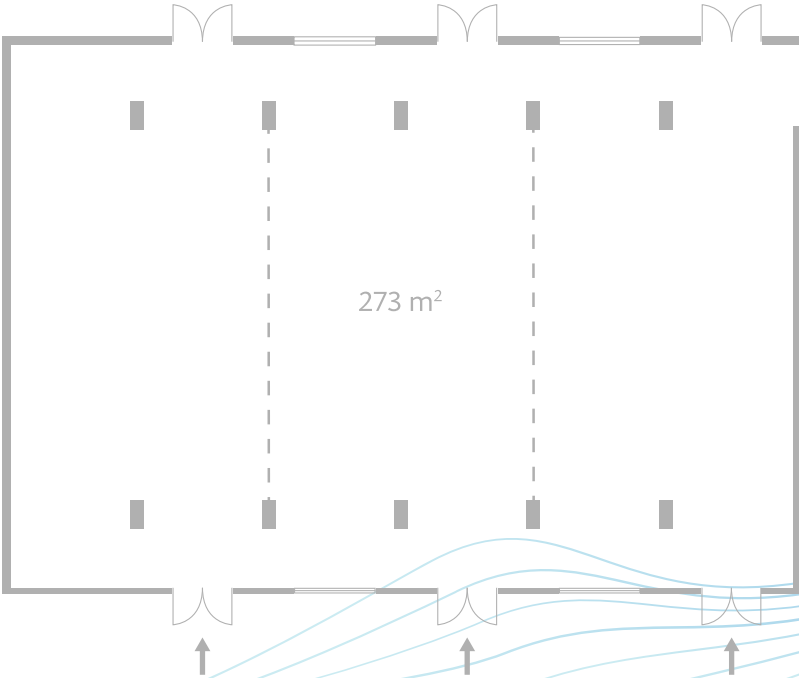
The hotel includes a polyvalent congress hall with a capacity of 220 seats, two conference rooms (Flora, capacity 80 seats; Sedra, capacity 40 seats), and two smaller meeting rooms, each with a capacity of 8 seats.

# MEETINGS & EVENTS

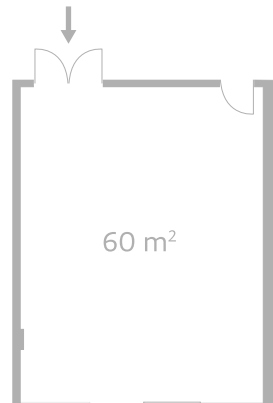
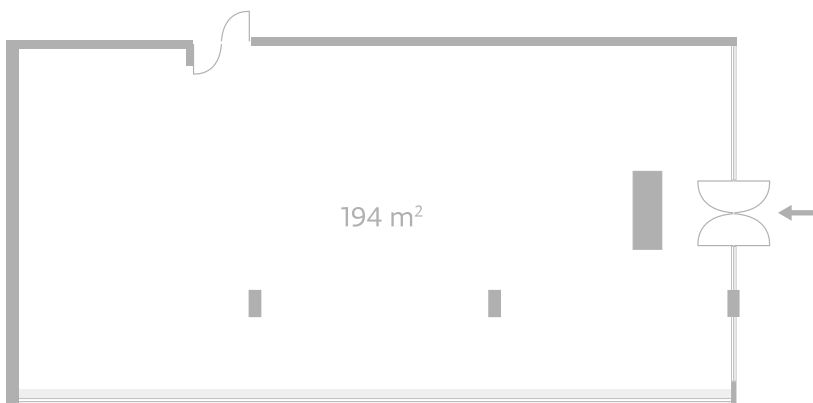
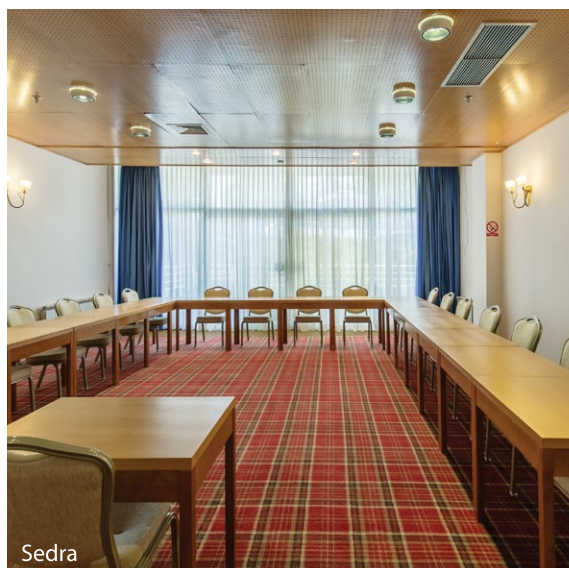
## Hall Features

Hall	Dimensions (m)	Area (m²)	Ceiling height (m)	Natural light	Hall layout			
					Theatre	U-shape	Classroom	Banquet
Congress hall	20,2 x 13,5	273	2.9	NO	220	38	40	40
Flora	20,2 x 9,6	194	2.9	YES	80	38	30	40
Sedra	9,0 x 6,7	60	2.9	YES	40	15	22	14
Degenija	6,7 x 3,3	22	2.9	NO				8
Runolist	6,7 x 3,3	22	2.9	NO				8

- Free high speed Wireless Internet access in all halls









# ACCOMMODATION

Hotel Jezero offers a total of 206 rooms and 19 suites, two of which are adapted for disabled persons. Accommodation units are equipped with minibar, LCD TV, direct dial telephone and free WiFi connection. Parking is included in the room rate.

# RESTAURANTS AND BAR

Guests can enjoy the view of relaxing greenery from the hotel restaurants as well. The pleasant ambience of our lobby bar and outdoor terrace is as enjoyable as our wide selection of beverages and treats. The restaurant's rich gastronomic offer includes specialities prepared from locally sourced products carrying the Lika Quality certificate, which will please even the most sophisticated gourmets' and gastro-enthusiasts' palates.

## Main restaurant

- area: 580 m<sup>2</sup>
- capacity: 350 pax
- service: combination of hot and cold buffet (breakfast/dinner) and serving (lunch/dinner)

## A la carte restaurant – Restaurant Jezero

- area: 320 m<sup>2</sup>
- capacity: 100 pax

## Lobby bar

- area: 145 m<sup>2</sup>
- capacity: 50 pax



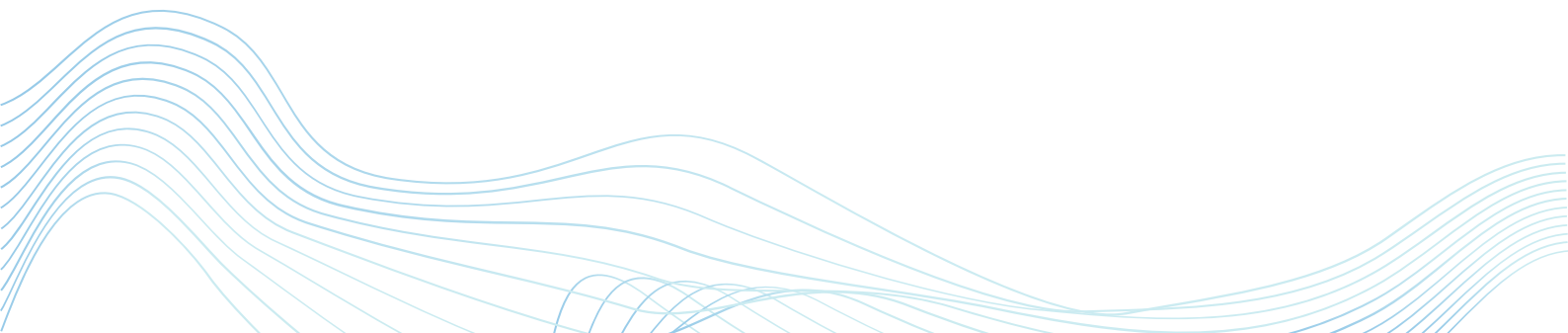
# HOTEL PLITVICE

Josipa Jovića 6  
53231 Plitvička Jezera, Croatia  
T. + 385 (0)53 751 830  
E. [info2@np-plitvicka-jezera.hr](mailto:info2@np-plitvicka-jezera.hr)  
W. [np-plitvicka-jezera.hr](http://np-plitvicka-jezera.hr)



Hotel Plitvice is a true architectural gem located in the heart of Plitvice Lakes National Park, at the very doorstep of Park visitor zone. The hotel's exclusive location is only part of its charm. The rest of its appeal lies in its history. The hotel was designed by the renowned Croatian architect Marijan Haberle and constructed in the period from 1954 to 1957. At the time of its construction, it was the first A category hotel in Croatia and beyond, and it is today considered one of the best architectural designs among public buildings of the post-World War II period. This architectural gem has been included in the protected cultural heritage list of the Republic of Croatia.

Within the Hotel Plitvice there is a 160-seat à la carte restaurant, a lobby bar with an outdoor terrace and a meeting hall. The restaurant is suitable for business lunches, dinners and presentations, while the meeting hall is an ideal venue for small gatherings and business events of up to 40–50 participants, with all the necessary audio-visual equipment.



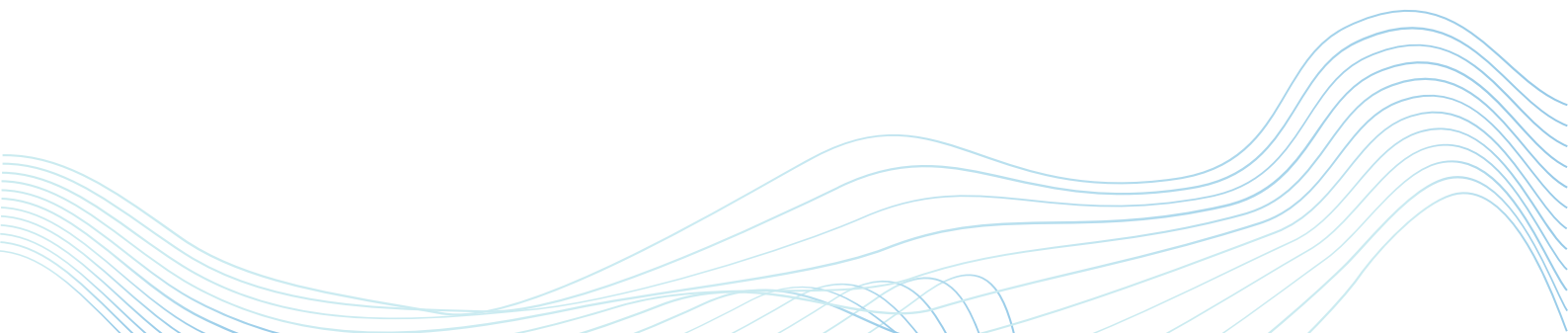
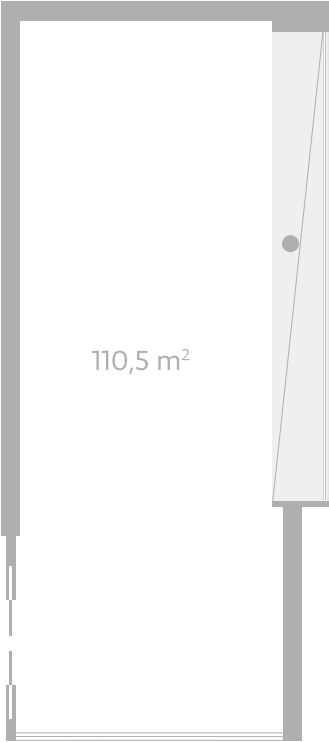


# MEETINGS & EVENTS

## Hall Features

Hall	Dimensions (m)	Area (m²)	Natural light	Hall layout	
				Theatre	Classroom
Meeting hall	17 x 6,5	110,5	YES	50	30

- Free high speed Wireless Internet access
- Projection screen included in rental price





# ACCOMMODATION

Hotel Plitvice offers 52 accommodation units, equipped with minibar, LCD TV, direct dial telephone, free WiFi connection and safe. Parking is included in the room rate.

# RESTAURANT AND BAR

The gastronomic offer of à la carte restaurant consists of local dishes and specialties prepared with products from Lika region. Their quality and origin are guaranteed by the Lika Quality certificate, so you can rest assured that every bite you take is an authentic gourmet experience.

## A la carte restaurant

- area: 150 m<sup>2</sup>
- capacity: 160 pax
- service: combination of hot and cold buffet (breakfast) and serving (lunch/dinner)

## Lobby bar

- area: 80 m<sup>2</sup>
- capacity: 50 pax
- outdoor terrace







**PLITVIČKA**  
**JEZERA** Nacionalni park  
National Park

